



**BECAUSE
IT MATTERS!!!**



SHETH CORPORATE
T O W E R

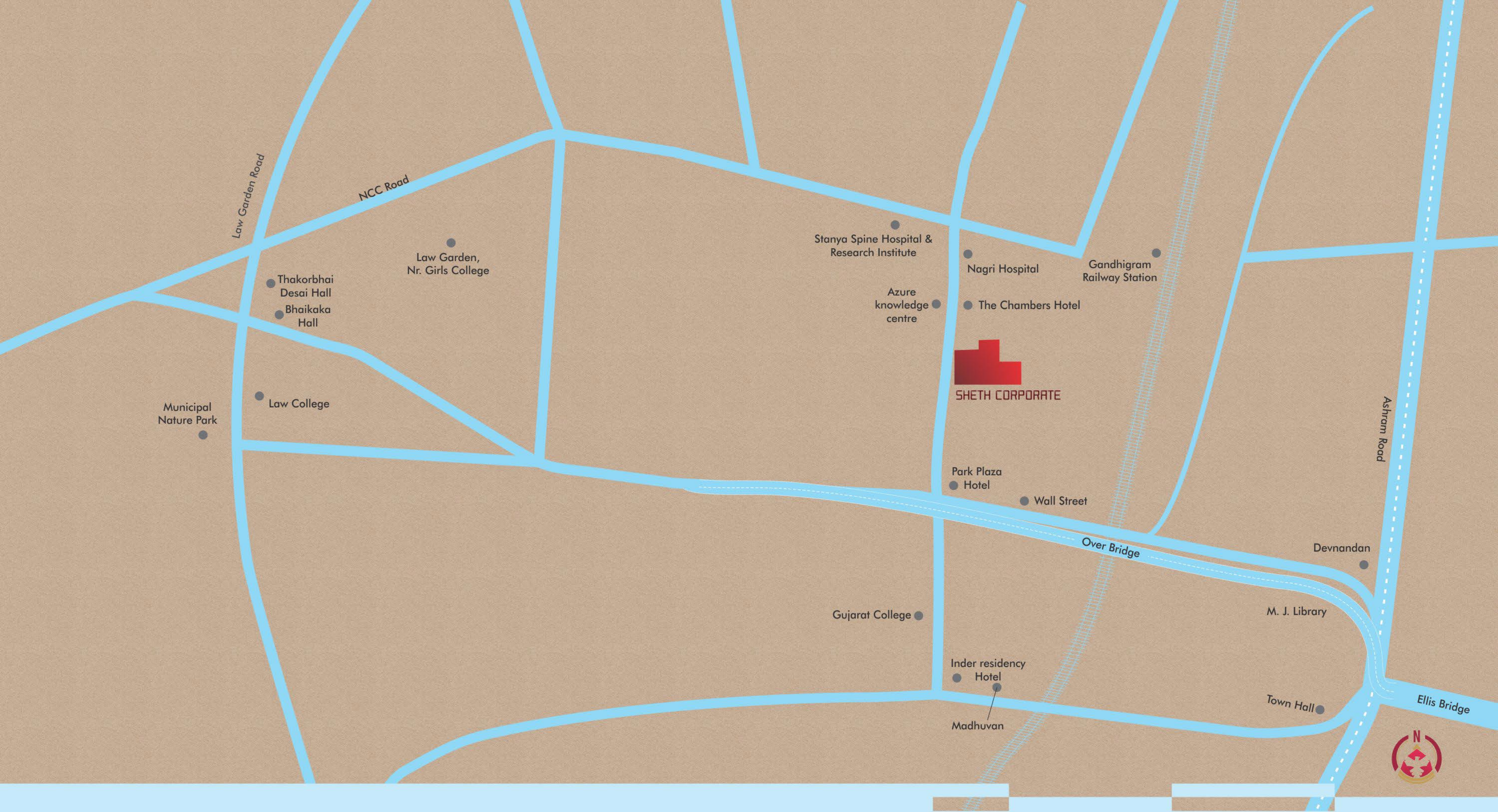


**WHERE
YOU SIT,
IT MATTERS !!!**

Most people are afraid to take action. Sure, they have ideas, but they don't do anything about it. It's scary to go down that path, which is why so few do. In the end, you have to determine what kind of life you want to live: one of mediocrity, or one of greatness? If your answer is the latter then sit on that great chair of progressive thinking and envision your success with others too. At Sheth Corporate, make it a reality.



SHETH CORPORATE
T O W E R



**WHERE
YOU ARE LOCATED,
IT MATTERS !!!**

& why heart of the city ???

- 10 min from C.G. Road
- 05 min from Ashram Road
- 10 min from Nehru Bridge
- 05 min from Ellisbridge
- 05 min from Law Garden



**SHETH CORPORATE
TOWER**



WHEN YOU WALK IN, IT MATTERS !!!

Most of us need something not to walk away from. We know you'll think this is crazy, but all we want to do is hold you. To show you around. To make you feel comfortable. To make you feel belonged. When you walk into the spectacular edifice of Sheth Corporate; it's really difficult to walk out.



SHETH CORPORATE
T O W E R

WHEN YOU ARE CHALLENGED, IT MATTERS !!!

What is familiar is comfortable. Having the courage to go into the unfamiliar can be tough, but not impossible. It requires a shift in perspective. In the creation of Sheth Corporate our vision has been to make it warm, welcome and a spirited space for your business to work and for you to feel energized all day. At Sheth Corporate you are challenged to do your best.



SHETH CORPORATE
T O W E R



WHERE YOU GROW, IT MATTERS !!!

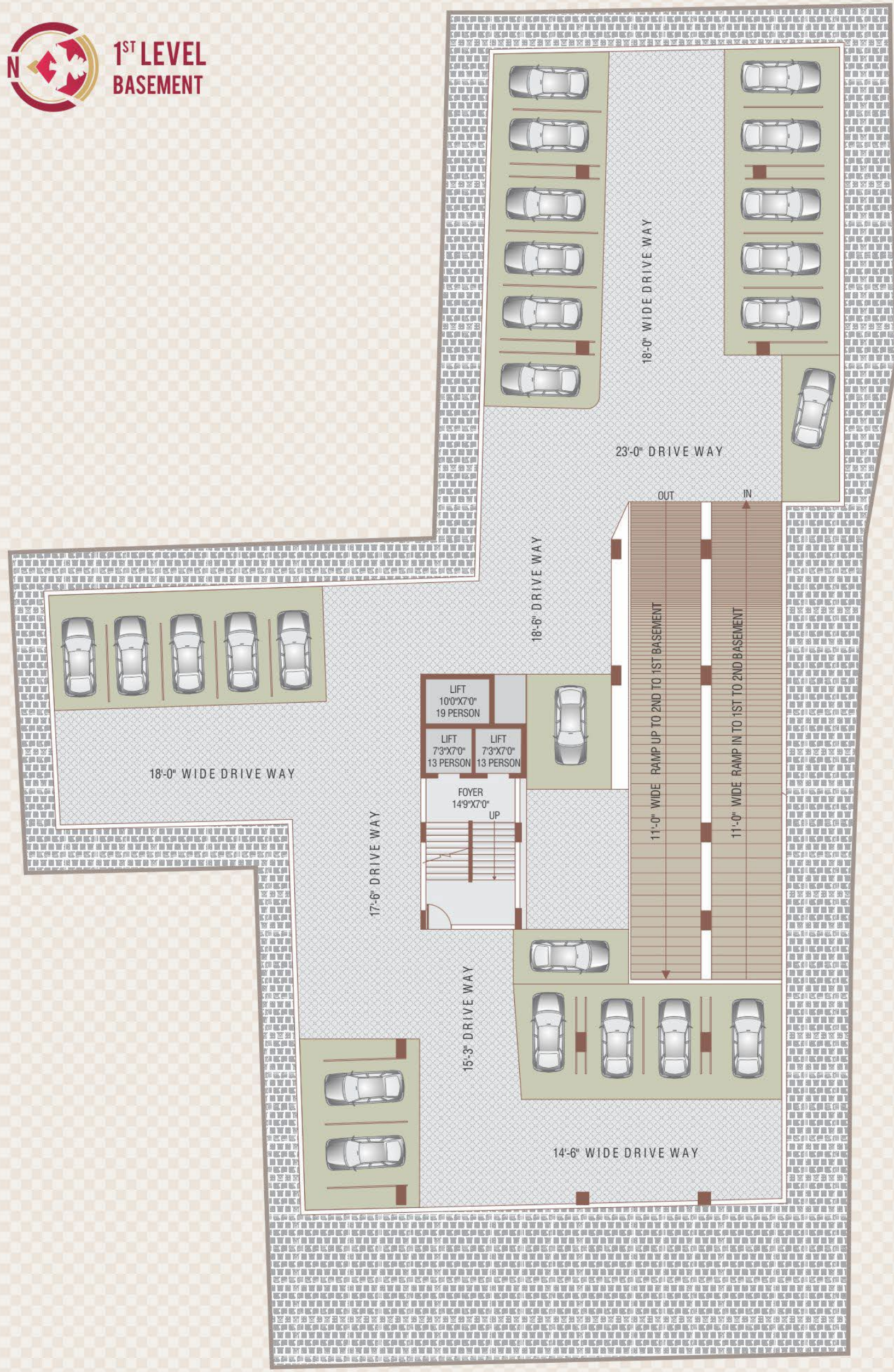
At Sheth Corporate, its openness and a willingness to embrace change, keeps you on an even knee with the world. The ultimate idea is to design the building around your needs and the changes that your business will require from time to time. Here, you never stop growing.



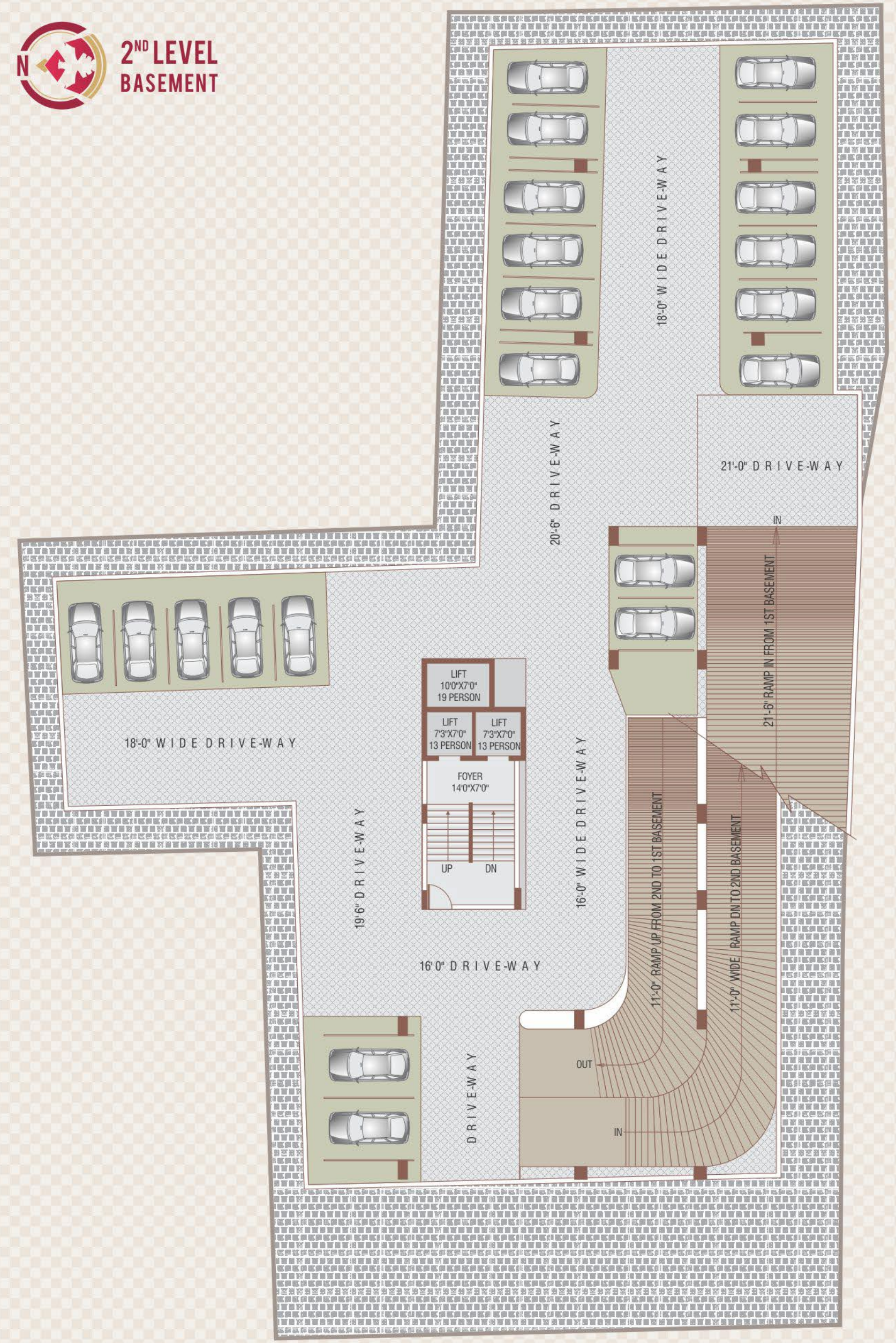
SHETH CORPORATE
T O W E R



1ST LEVEL BASEMENT



2ND LEVEL BASEMENT



GROUND FLOOR PLAN



1ST FLOOR PLAN





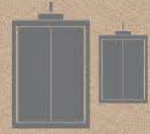
2ND TO 14TH
LEVEL PLAN



WHAT YOU GET, IT MATTERS !!!



EARTHQUAKE RESISTANCE
STRUCTURE



HIGH SPEED
3 LIFTS



TWO LEVEL BASEMENT
MECHANICAL PARKING



RAIN WATER
HARVESTING SYSTEM



FIRE SAFETY



24X7 WATER SUPPLY

WHAT YOU EXPECT, IT MATTERS!!!!

FLOORING

Office : 2 x 2 Vitrified Finish | Common Passage,
on each floor : Granite / Vitrified Tiles finish.
Foyer Lobby : Italian Marble with attractive Design.

OFFICE INTERIOR

Split A/c Provision only | Branded Sanitary ware & C.P. fittings |
Fire Resistant Copper concealed wiring with modular switches,
Havells/Equivalent | Distribution board with MCB & ELCB Branded
fittings and fixtures.

ENTRANCE LOBBY

Elegantly designed air conditioned entrance foyer.

GENERAL

24 hrs water supply.

SECURITY

CCTV for all Common areas & Parking areas.

ELEVATION FEATURES

Imposing Glass Facade | Cladding | Special Night Light effect.



Developer



Office :
4, Santoshbaug, B/h. Azure Complex,
Opp. Nagri Hospital, Ellisbridge, Ahmedabad-06.
email : contact@shethdevelopers.in
www.shethdevelopers.in

Contact

+91 77780 44455/66

DISCLAIMER

The developers reserve the right to change plans, specifications, amenities and features without prior notice or obligation, at their sole discretion and subject to approval of Government authorities. Specification, write-ups, layouts, plans and pictures shown in the booklet are only indicative. All rendering pictures and maps are the artist's conception and not actual depiction of the building, roadways or landscaping.